



**HYUNDAI**

L & C

**HANEX<sup>®</sup> CATALOGUE  
2021**



## TABLE OF CONTENTS

5	About us
7	Business Overview
11	Acrylic Solid Surface
15	Colours 2021
52	Applications
62	Sinks & Bowls Program
75	Technical Data
84	Warranty
86	Certifications
89	Standard Size





## ABOUT US

Hyundai L&C, a leading building materials company in Korea, has been reborn under a new name: Hyundai L&C, a business unit of the Hyundai Department Store Group.

By combining core competencies and constantly striving to go above and beyond, our creative minds are always working to conceive and implement new, innovative solutions. We are pleased to announce that we will continue to focus on this approach under the name "Total Living Interior Company".

We always strive to produce maximum performance with minimum environmental impact, and this formula is reflected in every single process.

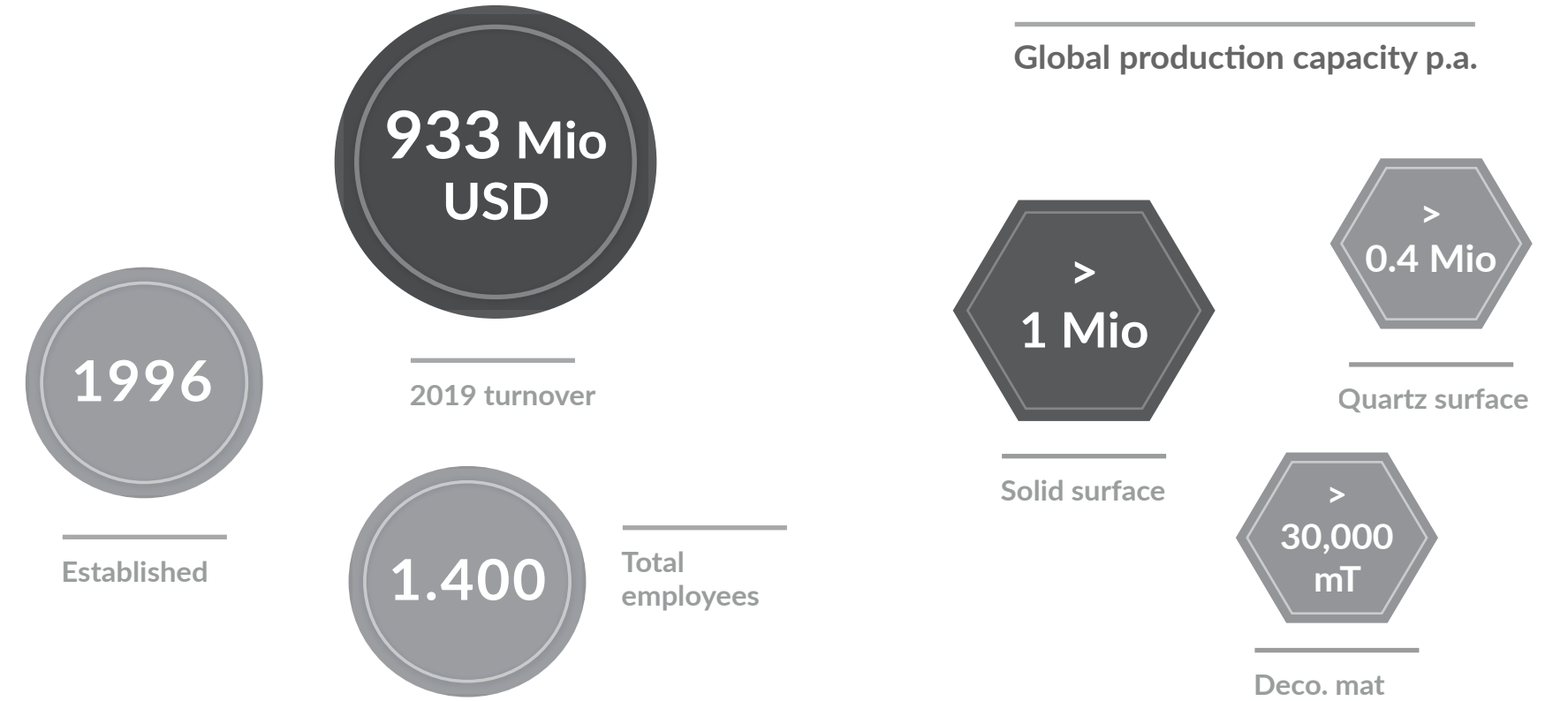
This core competence is reflected in our R&D capabilities in developing environmentally friendly, energy-saving and new building materials.

Furthermore, by diversifying our business structure and offering pragmatic solutions, we are able to better adapt to the ever-changing demands and needs in the fast-changing world and sustainably improve our customers' quality of life.

We create significant added value by combining advanced technology with our experience and understanding of different challenges - day after day.

Challenges we accept and together we create a new living culture / lifestyle of the future.

HYUNDAI L&C



## BUSINESS OVERVIEW

The goal of Hyundai L&C is 15% average annual sales growth and 2 trillion KRW in global sales by 2021. We have achieved a profit of 120 billion KRW, and we plan to continuously expand our overseas sales. In addition, through relentless efforts to develop new technologies and innovative products, we will provide valuable solutions with solid quality assurance that suit our clients' needs. Through internal innovation and external growth, and led by new business and distribution channels, we have advanced from our traditional business structure centered on construction materials to become the representative company for total living interior in Korea.



L & C

## BUILDING MATERIALS

We are growing every day as Korea's most representative green construction material company that values humanity and nature.

We are continuously developing high-quality construction materials and interior products that fit our customers needs, windows and doors that maximize insulation and energy-savings, eco-friendly flooring and wallpaper that prioritizes the health of our customers, and interior stones that are perfectly suited for upscale interior spaces.

## HIGH-FUNCTIONAL MATERIALS

Using deco film (PET, PP, PVC) manufacturing technologies, we produce different types of finishing materials including interior film, high-gloss decorative film, surface materials for general furniture, decorative film for metals or vessels, thermal insulation film, and adhesive glass film.

In addition, thermal contraction film used for packaging labels and packaging film for pharmaceutical products have proven their performance in Europe, Central and South America, the Middle East, and Asia.

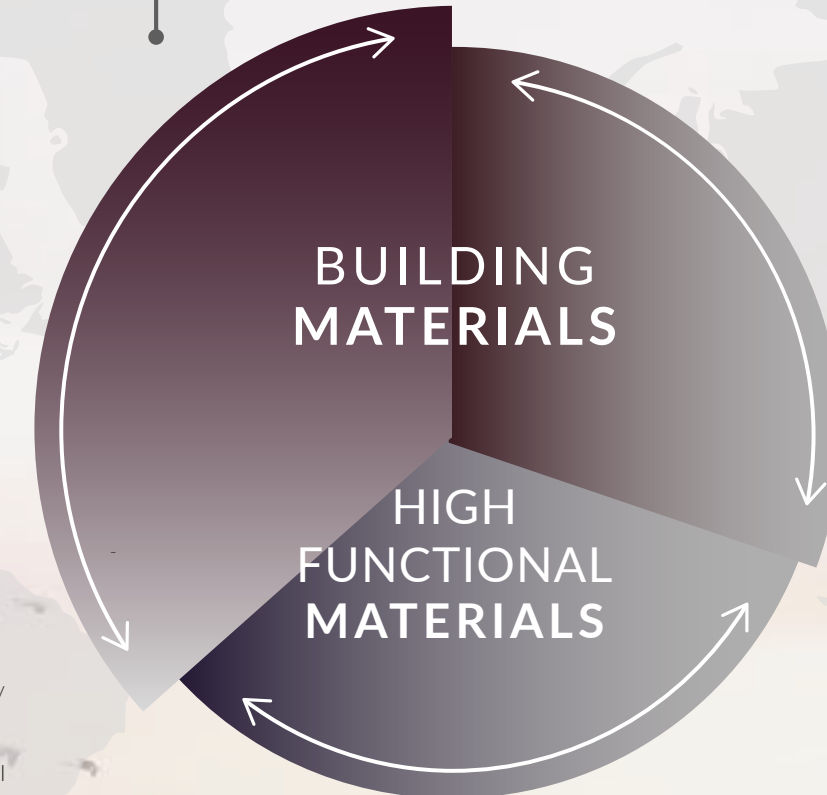
## Hanex® Solid Surfaces

### Specialized in premium building materials

- Track record since 1995; Our passion and focus replies always to identify the next trends and new technologies
- Breathtaking patterns and homogeneous structures all through the entire material
- Luxurious marble and natural stone designs with our new colours / 11 decors
- Implementation of customised colours and patterns

### Full Service Provider

- Own main warehouse in Germany, wide network of distributors throughout Europe
- Vertical diversification  
→wide range of sheets, sink & bowls (thermoformed/casting) and other finished goods available
- Proactive interaction and support by our professional team members



## HanStone® Quartz Surfaces

- Significant track record since 2004
- Actually more than 45 decors in 10 different categories for the indoor area
- From classic to extravagant
- From natural to modern

## BODAQ GLOSSIA ECOLOID

- Furniture Foil (PET / PVC)
- Exterior Foil (PVC)  
- RAL-Certificate
- Interior Foil (PVC)  
- BODAQ Foil / Tiles / Sheets (self-adhesive)





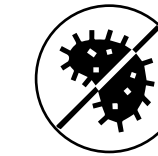
# WHY ACRYLIC SOLID SURFACE

Hanex® Solid Surface products are crafted from a unique blend of acrylic resins and natural materials. Ideal for all healthcare, food preparation, commercial, institutional and residential applications.



### Easy to work with

It can be bent and shaped during fabrication and cut with most standard saws.



### Antimicrobial

Solid surfaces do not support bacterial growth (non-porous), making them invaluable in healthcare settings.

Seamless installation prevents crumbs, dirt, stains and bacterial and other pathogens from entering.



### Highly durable

Solid, perfectly smooth and homogenous material whose regenerable surface always looks brand-new.

Non-porous, acid-resistant and therefore easy-to-clean surface.

Are resistant to stains.



### Environmentally friendly

Renewable and repairable.

Sanding will remove scratches, small chips, and scorches, also ideally for heavy-traffic areas or façade application.



### Endless design possibilities

Thermoformable / Seamless.

Almost any shape or size can be produced.

**Specialized manufacturer**

Bundling up the special know-how along the entire value-added chain of premium surfaces.

**Proven safety**

All necessary certificates and technical regulations available.

**Full service provider**

We succeeded in offering our partners substantial value added with innovative, tailor-made products / solution the result of our systematic focus on customer needs.

---

## THE MAIN BENEFITS OF HANEX®

---

**Wide variety of colours and patterns**

Enable almost endless range of personalisation possibilities.

Ensures freedom of configurations and consequently the highest possible degree of flexibility.

**Outstanding quality products**

Flexible use of single / double belt casting unit (almost unique feature).

One of the technological innovations leader in the environment of premium surfaces.

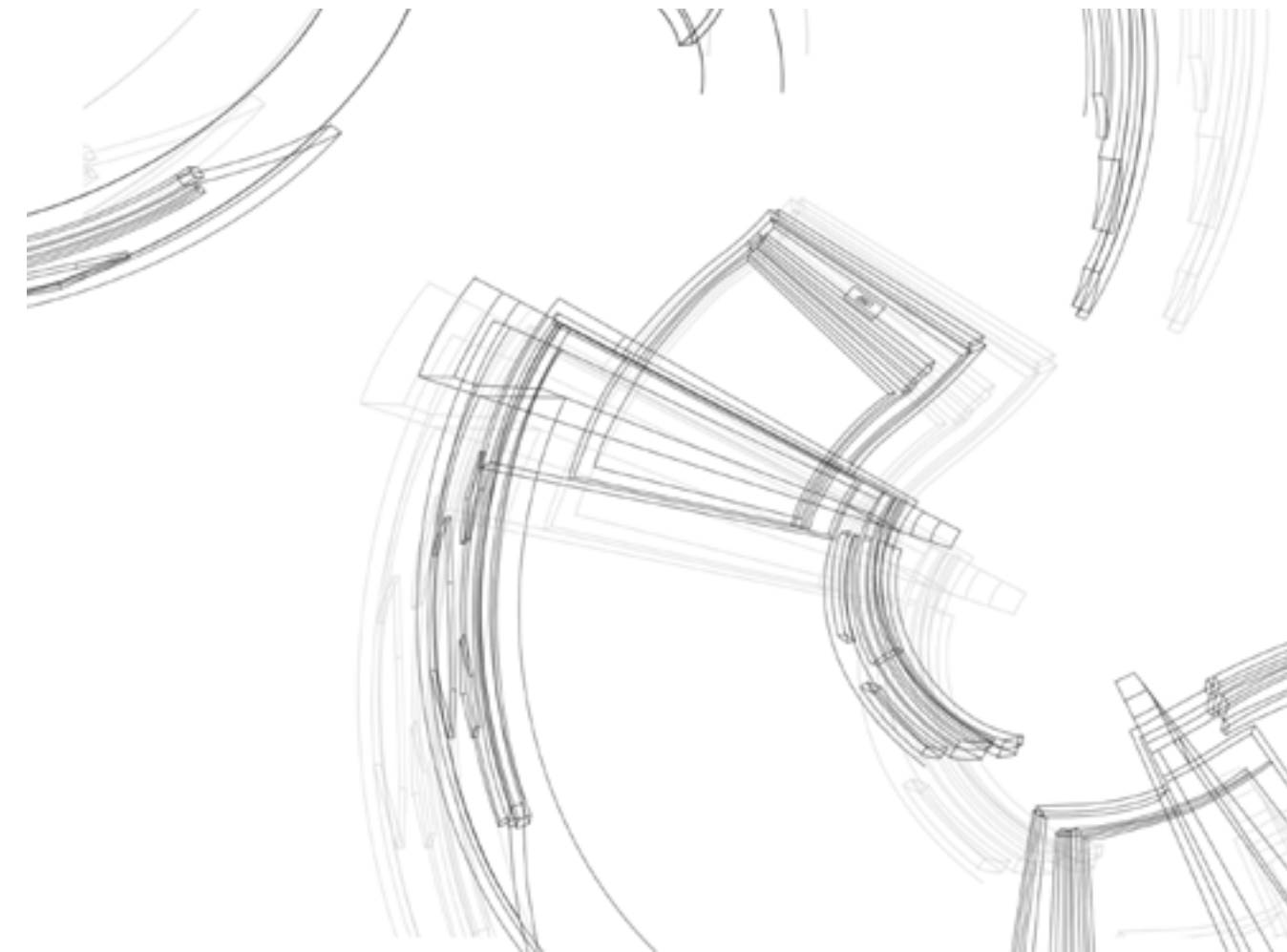
**Long-term track record**

Since 1995 we are operating as a globally manufacturer of acrylic solid surfaces.

**Short-term availability**

The current collection includes all trendy colours and patterns that can be realised with solid surface material.

Our broad network of distributors and processors enables projects to be realised smoothly and promptly.





COLOUR COLLECTION

2021



VENATO  
MARBLE  
SPARKLE

CASCADE  
ICE

CASCADE  
CREAM

VENATO  
MARBLE  
SNOW

## NEW COLOURS OF HANEX®

CASCADE  
GREY

MODERN  
CONCRETE

Through both, our sister companies and our parent company the Hyundai Department Store Group, new trends are bundled by our design team and converted into stunning designs and concepts together with our development teams after intensive research and testing.

CASCADE  
BEIGE

SMOKY  
CONCRETE

The 11 new decors will set new accents in interior design. We look forward to your great results.

CASCADE  
WHITE

FROSTY  
CONCRETE

CASCADE  
BLACK



VM-001 VENATO MARBLE SPARKLE

**NEW COLOUR  
CASCADE**

**CC-001  
CASCADE ICE**



**NEW COLOUR  
CASCADE**

**CC-002  
CASCADE CREAM**





**NEW COLOUR  
CASCADE**

**CC - 003  
CASCADE GREY**



**NEW COLOUR  
CASCADE**

**CC-004  
CASCADE BEIGE**





**NEW COLOUR  
CASCADE**

**CC-005  
CASCADE WHITE**





**NEW COLOUR  
CASCADE**

**CC-006  
CASCADE BLACK**



**NEW COLOUR  
VENATO MARBLE**

**VM-001  
VENATO MARBLE  
SPARKLE**



**NEW COLOUR  
VENATO MARBLE**

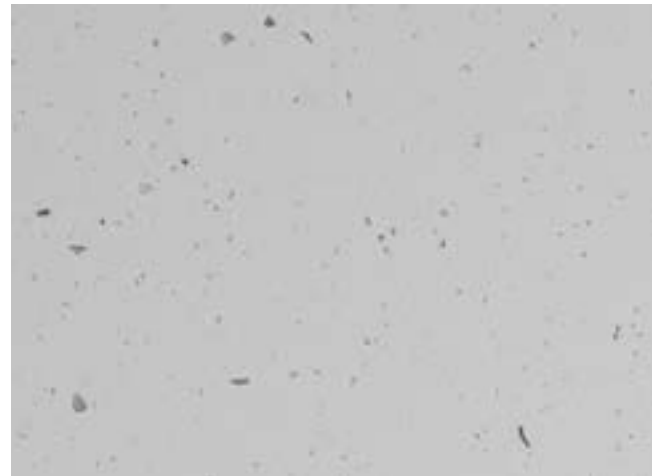
**VM - 002  
VENATO MARBLE  
SNOW**





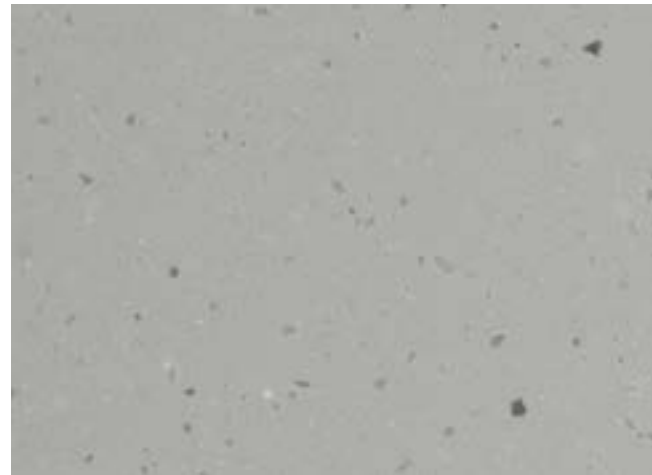
**NEW COLOUR  
CONCRETE**

**CT-001  
FROSTY CONCRETE**



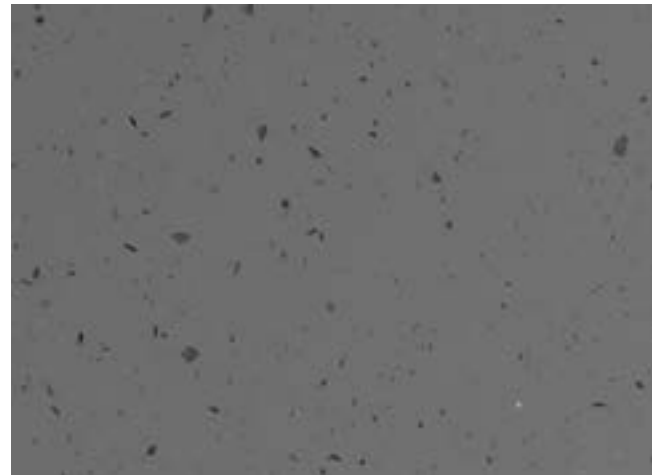
**NEW COLOUR  
CONCRETE**

**CT-002  
MODERN CONCRETE**



**NEW COLOUR  
CONCRETE**

**CT-003  
SMOKY CONCRETE**





# BELASSIMO EPISODE II

Discover the greatness and glory of our new collection. Inspired by the beauty of Mother Earth and the desires of people to harmonies their environment, with our new collection we create a basis to combine nature with urban luxurious aura.



BL-206 SLATE GREY



BL-219 MARFIM



BL-256 MOUNTAIN FROST





BL-201 KASHMERE



BL-205 SEDIMENTARY



BL-300 FLOT



BL-209 MACASSAR



BL-218 MARFIM



BL-206 SLATE GREY



BL-205 SEDIMENTARY



# STRATUM

Stratum series is inspired by nature in a worldly perspective and soft range of colors with unique, organic patterns. You discover the artistic, unconventional scene of the nature. Enjoy the new view of the earth. Create your own, unique and long-lasting atmosphere in the style of the depth and boundlessness of stone.



ST-103 NUBLADO



ST-201 ROMANO

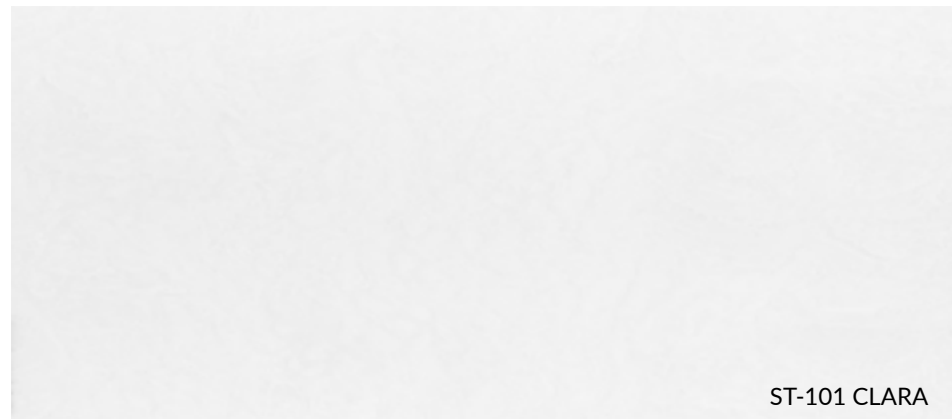


ST-106 GRENCIO

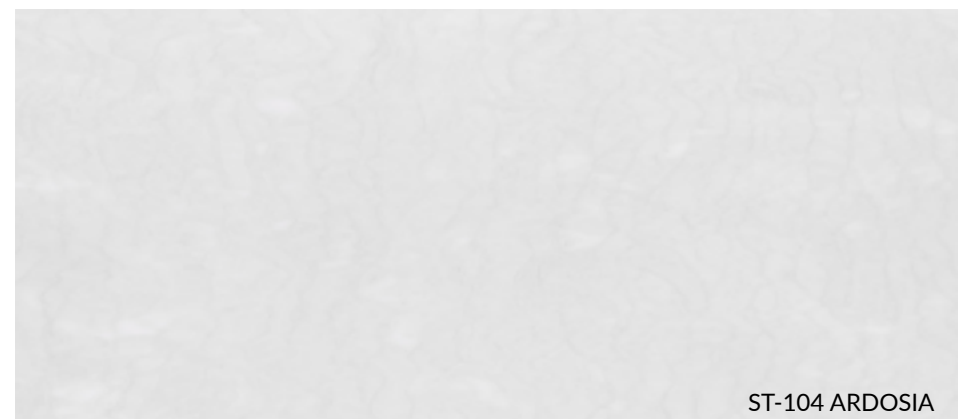




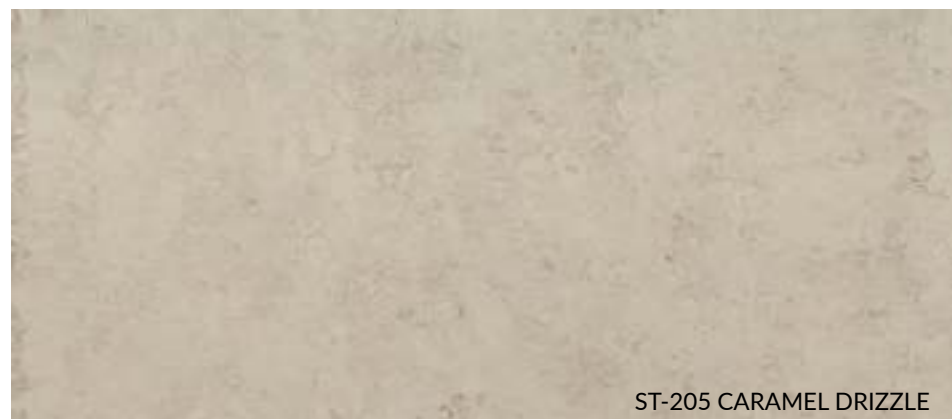
ST-102 MARELINHO



ST-101 CLARA



ST-104 ARDOSIA



ST-205 CARAMEL DRIZZLE



ST-101  
CLARA

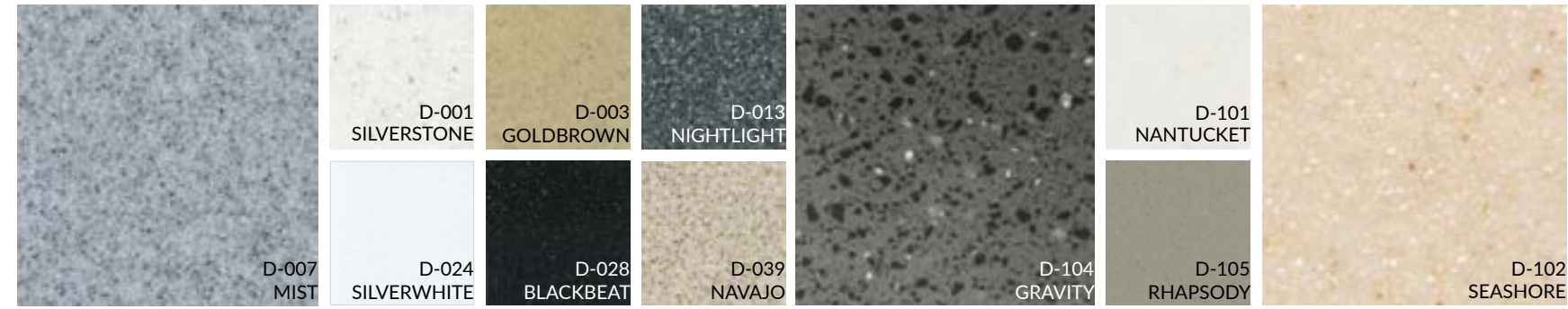


ST-103  
NUBLADO

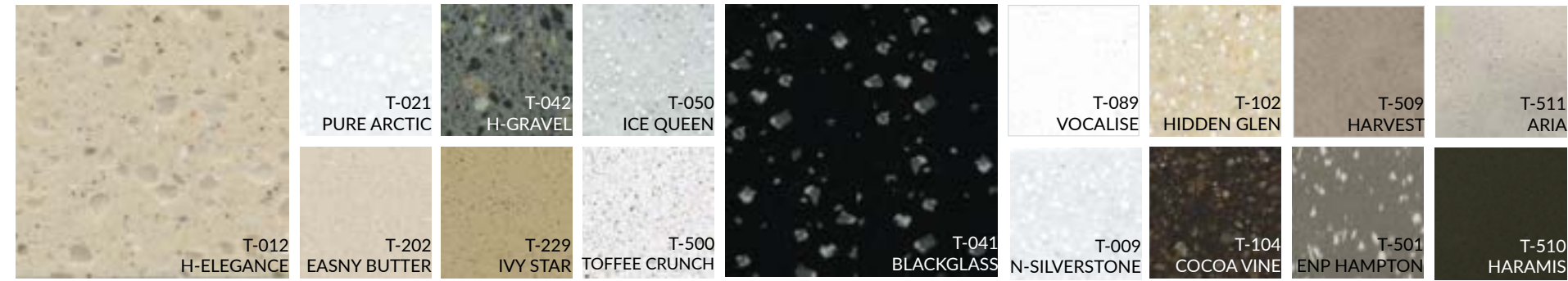


ST-201  
ROMANO

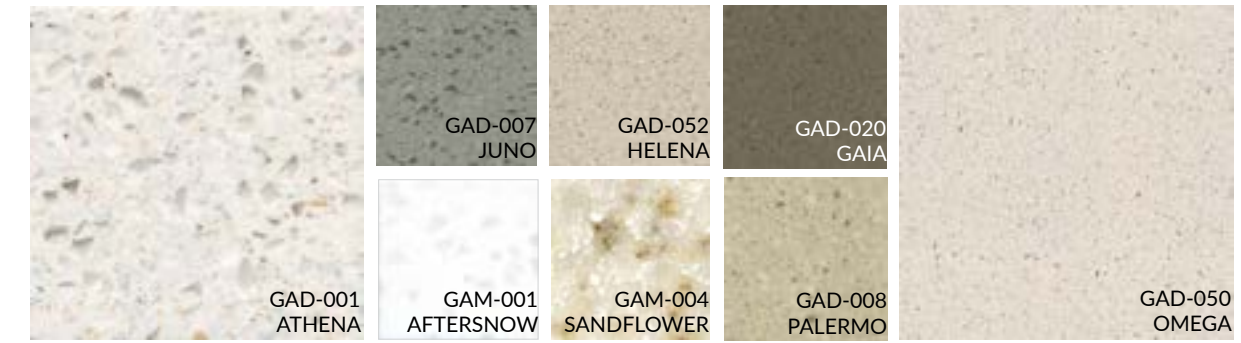
**DUO**



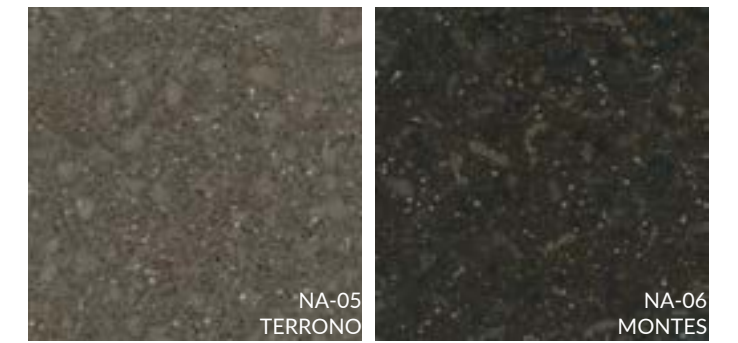
**TRIO**



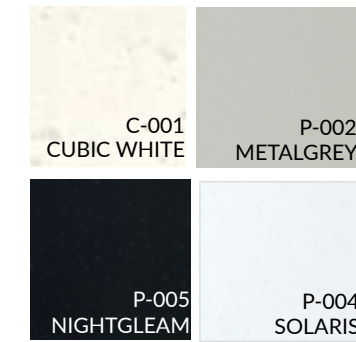
**GALLERIA**



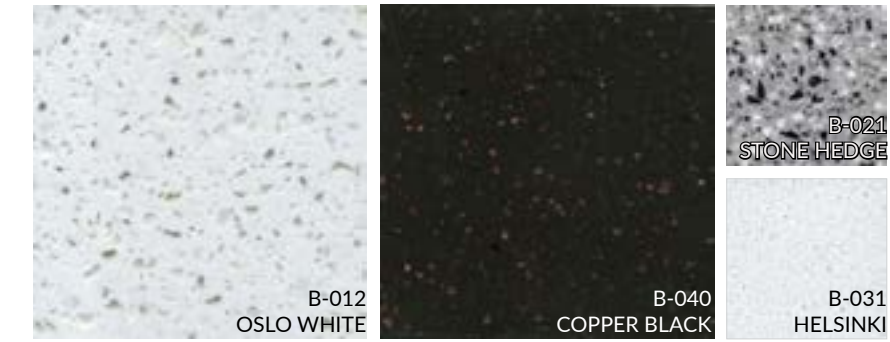
**NATIVO**



**CUBIC & PEARL**



**BRIONNE**

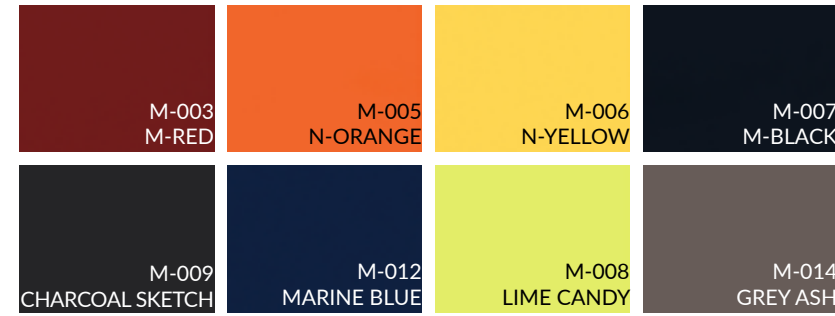


**THERAPY**

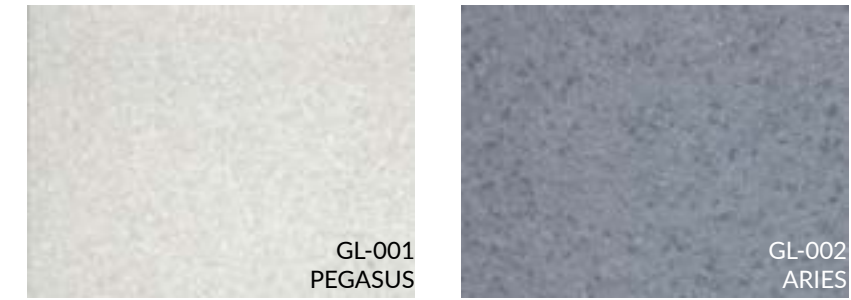




**MAGIC**



**GLITTERING**



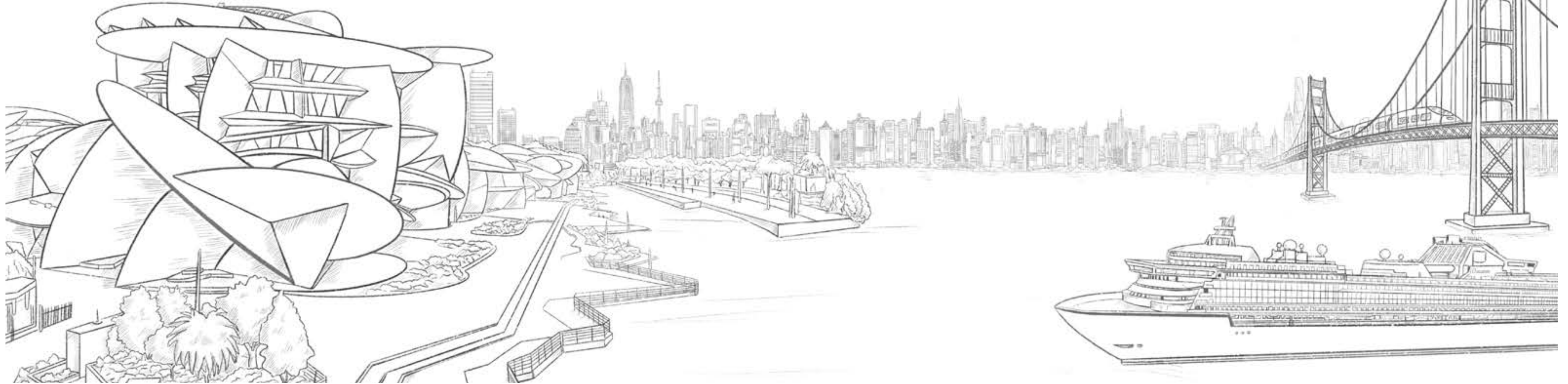
**SOLO**





# THE DIVERSITY OF HANEX® APPLICATIONS

*The beauty and everlastingness of Mother Nature is reflected in our decors and the wide range of possible applications. In the urban environment, our end products are used in almost all areas.*





ST-101  
CLARA



ST-101  
CLARA





ST-103  
NUBLADO



S-008  
N-WHITE



ST-101  
CLARA



ST-201  
ROMANO







CT-001  
FROSTY CONCRETE



CT-002  
MODERN CONCRETE





HANEX®  
SINKS & BOWLS



# HANEX® SINKS & BOWLS

The unlimited design flexibility of HANEX® enables you to create a beautiful and durable aesthetic in any commercial setting, be it a hospital, bank, restaurant, hotel or office space.

Commercial applications include: Office/hospitality and medical counters & worksurfaces, reception desks, bathroom worksurfaces and vanities, tabletops, food preparation areas, commercial fit outs including aesthetically seamless wall cladding, lift & foyer surrounds, lighting and more...

## Legend

The models listed here are only a small selection of the end products we offer directly and only show our casting sinks & bowls models. Our entire collection is made of 100% Acrylic Solid Surface.

### Overflow

- ⊛ With overflow
- Without overflow

### Installation

- ⊖ Undermounted
- ⊕ Topmounted

Our local partners have a wide range of thermoformed sinks, basins and other products. Please contact us [info@hyundailnc.eu](mailto:info@hyundailnc.eu) directly or our partners <https://hyundailnc.eu/hanex/de/network/> for further questions.



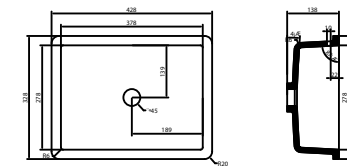
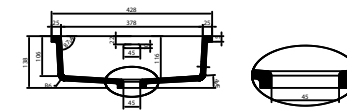


# HANEX® CASTING BOWLS

**VB4201 / Single**

- S-008 N-White
- S-004 Ivory

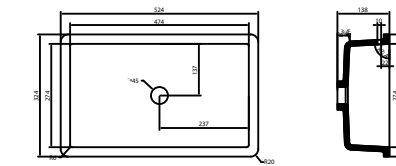
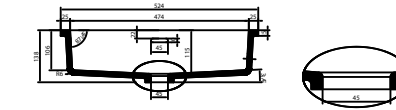
**NEW**



**VB5201 / Single**

- S-008 N-White
- S-004 Ivory

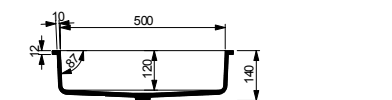
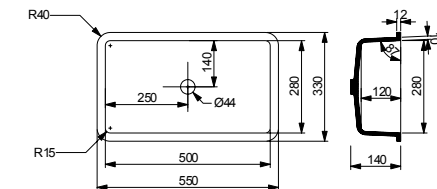
**NEW**



**VB5501 / Single**

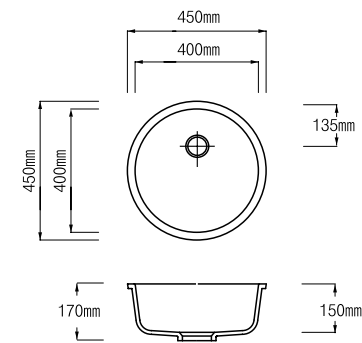
- S-008 N-White
- S-004 Ivory

**NEW**

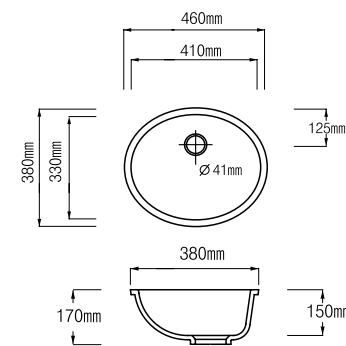


# HANEX® CASTING BOWLS

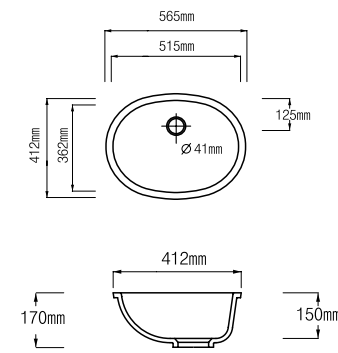
**VB4515 / Single**



**VB4615 / Single**



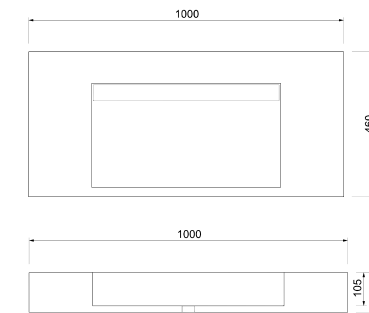
**VB5615 / Single**



**VB1001 / Single**



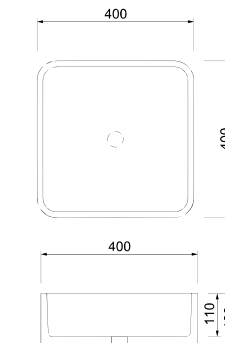
**NEW**



**VB4001 / Single**



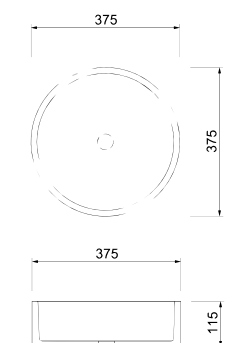
**NEW**



**VB3701 / Single**



**NEW**



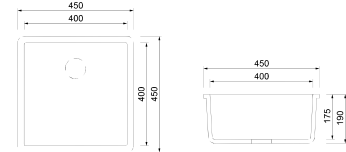


# HANEX® CASTING SINKS

**SB4001 / Single**



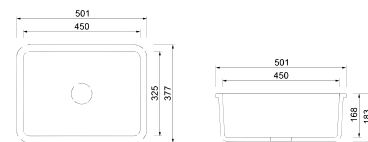
**NEW**



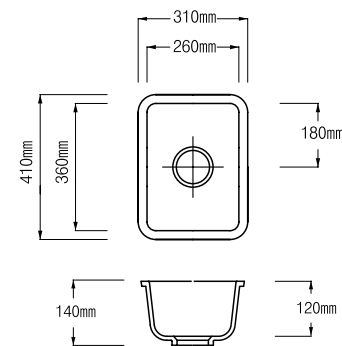
**SB5001 / Single**



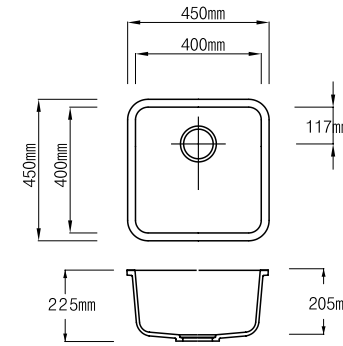
**NEW**



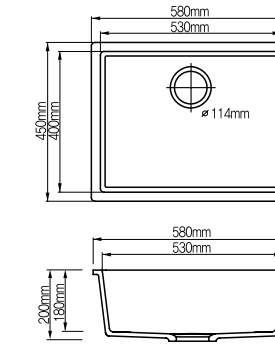
**SB3112 / Single**



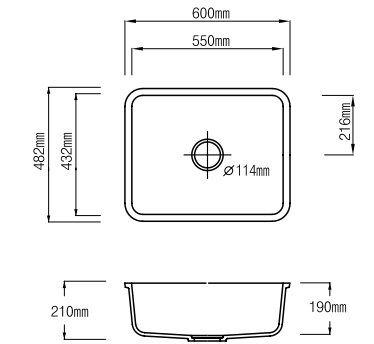
**SB4520 / Single**



**SB5818 / Single**



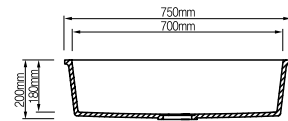
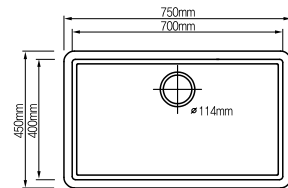
**SB6019 / Single**



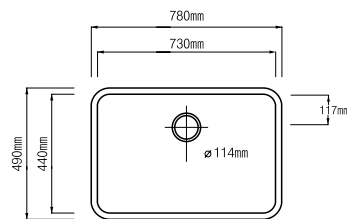
# HANEX® CASTING SINKS

# HANEX® ACCESSORIES

## SB7518 / Single



## SB7820 / Single



## Waste Valve / Bowls



WV 14  
push to open



WV 14  
non lockable

## Drain Set / Bowls



DS1  
Overflow  
Square

The pictures listed here are only examples and may differ from the assortment.  
The selection of accessories may vary and should be requested from the Hanex®-Team if necessary.





HANEX®  
TECHNICAL DATASHEET



# TECHNICAL DATA SHEET

## 1 Product identification

Hanex® Solid Surfaces

Hanex® is a registered trademark of Hyundai L&C Corporation.

## 2 Manufacturer

**Corporate Identification Manufacturer**  
Hyundai L&C Corporation  
East Central Tower, 1077  
Cheonho-Daero, Gangdong-Gu,  
Seoul, 05340, Korea

**Contact for Product Information**  
Hyundai L&C Europe GmbH  
Düsseldorfer Straße 13  
65760 Eschborn, Germany

Tel. +49 6196 5869 012  
info@hyundailnc.eu

## 3 Foreword

This technical advice is correct to the best knowledge and experience according to the current state of the art at the date of its publication.

The provision of this recommendation does not include any warranty of product properties expressed or implied. A liability of the recommendation beyond the legal requirements is not taken over. The contents are revised and extended constantly; we recommend the consultation for specific demands.

In addition, all relevant regulations on occupational health and equipment safety that apply to the work in question must be observed.

## 4 Product description

Hanex® is a high-performance composite material for decorative and functional applications for the interior, kitchen, bathroom and furniture area. Other special applications are also available, such as exterior use.

Hanex® provides design flexibility, practicality and durability. Supplied in sheets or shapes and can be fabricated with conventional woodworking tools.

## 5 Chemical and Stain Resistance

Hanex® is an acrylic solid surface with a high level of alumina trihydrate content as the filler, an ingredient which provides superior resistance to stains and chemicals. However, exposure to harsh chemicals should be avoided. In case of surface contamination, quickly flush affected area with a domestic gritty cleaner and water; sand if necessary. As a rule of thumb: Surface damage may vary with the chemical strength and exposure time.

### Chemical and Stain Resistance Report

The (✓) refers to the appropriate method for removing chemical stains.

Classification	%	Gritty Cleaner or Water	Scotch Brite™ or Sand Paper	Classification	%	Gritty Cleaner or Water	Scotch Brite™ or Sand Paper	Properties	Unit	Result	Test Method	Notes
Acetic Acid	5	✓		Kerosene	20	✓		Specific Gravity	g/cm <sup>3</sup>	,8		
Acetic Acid	10	✓		Methyl Alcohol	5	✓		Tensile Strength	psi <sup>5</sup>	,400	ASTM D 638	Instron
Acetic Acid	90		✓	Methyl Ethyl Ketone		✓		Tensile Modulus	psi <sup>1</sup>	,4 X 10 <sup>6</sup>	ASTM D 638	Instron
Acetic Acid	98		✓	Mineral Oil		✓		Elongation	% min <sup>0</sup>	,42	ASTM D 638	Instron
Acetone		✓		Nitric Acid	10		✓	Flexural Strength	psi <sup>9</sup>	,200	ASTM D 790	Instron
Aqua Regia			✓	Nitric Acid	30		✓	Flexural Modulus	psi <sup>1</sup>	,38X 10 <sup>5</sup>	ASTM D 790	Instron
Ammonia	10	✓		Nitric Acid	40		✓	Hardness (Rockwell)		92	ASTM D 785	M scale
Ammonium Hydroxide	5	✓		Nitric Acid	70		✓	Thermal Expansion	mm/m c <sup>3</sup>	,04 X 10 <sup>-5</sup>	ASTM D 696	
Ammonium Hydroxide	28	✓		Phenol	40		✓	Gloss (60° Gardner)		5 -2 0	ANSI Z124	
Benzene		✓		Phenol	85		✓	Color Stability		No change	NEMS LD3	200 hours
Calcium Thiocyanate	78	✓		Phosphoric Acid	25		✓	Wear & Cleanability		Passes	ANSI Z124	
Chloric Hydroxide	20		✓	Phosphoric Acid	85		✓	Boiling Water Surface Resistance		No change	NEMA LD3	
Chloroform	100		✓	Silver Nitrate	10	✓		High Temperature Resistance		No change	NEMS LD3	
Citric Acid	10	✓		Sodium Hydroxide	10	✓		Stain Resistance		Passes	NEMA LD3	
Dimethyl Formamide				Sodium Hydroxide	25	✓		Impact Resistance		No fracture	NEMA LD3	6 mm sheet - 91,44 cm Drop height - 227 g Sphere
Ethanol	95	✓		Sodium Hydroxide	40	✓		IZOD Impact Strength	ft.lbs /in	0,28	ASTM D 256	Impact
Ethyl Ether		✓		Sodium Hypochlorite	5	✓		Water Absorption Weight	% max <sup>0</sup>	,03	ASTM D 570	
Formic Acid	88		✓	Sodium Sulphate			✓	Fungi & Bacteria		No attack	ANSI Z124	
Formaldehyde		✓		Sulphuric Acid	25	✓		Weatherability		No change	ASTM D 1499	1.000 hours
Furfural			✓	Sulphuric Acid	30	✓						
Gasoline		✓		Sulphuric Acid	77		✓					
Hydrochloric Acid	10	✓		Sulphuric Acid	96		✓					
Hydrochloric Acid	20	✓		Toluene			✓					
Hydrochloric Acid	37	✓		Xylene		✓						
Isopropyl Alcohol		✓		Zinc Chloride		✓						

#### Test Method - 16 hours exposure per substance:

\* For exposures to chemicals other than above, it is recommended to test on a sample piece of Hanex® to confirm suitability for application.  
\*\* Common domestic residues, such as the examples listed below, can be removed with water and household cleaners:

Alcohol	Hair dyes	Shoe polish	Ink
Juices	Soy sauce	Cigarette stain	Lipsticks
Sugar	Coffee	Lotions	Tea
Cooking oil	Mustard	Tomato sauce	Crayon
Nail polish	Vinegar	Curry powder	Pencil lead
Whisky	Make-up	Salt	Wine

# SAFETY DATASHEET

## 1 Hazards identification

*Hazards identification*

*Label elements including precautionary statements*

Symbol: N/A  
Signal Word: N/A  
Hazard/Risk Statement: N/A  
Precautionary Statement: N/A

*Other hazard / risks which are not included in the classification criteria (NFPA)*

Health:1 Fire:1 Reactivity:0

## 2 Composition / Information on ingredients

Hanex® product combined follow ingredients together:

No.	Chemical Name	CAS No.	EG-No.	Content (%)
1	MMA(Methylmethacrylat)	80-62-6	201-297-1	24.6 %
2	PMMA (Polymethylmethacrylat)	9011-14-7	-	5.8 %
3	Haftvermittler	2530-85-0	219-785-8	0.2 %
4	Vernetzungsmittel	97-90-5	202-617-2	0.2 %
5	Härter	1931-62-0	217-691-1	0.3 %
6	Calciumhydroxid	1305-62-0	215-137-3	0.2 %
7	Stabilisatoren	112-55-0	203-984-1	0.1 %
8	AL(OH)3	21645-51-2	244-492-7	59.0 %
9	Toner	13463-67-7	236-675-5	0.4 %
10	Flammschutzmittel	68333-79-9	-	9.1 %
TOTAL				100 %

## 3 First aid measures

*Eye contact*

Wash with large amounts of water until no evidence of chemical remains (at least 15-20 minutes). Get medical attention, if needed

*Skin contact*

Wash with soap or mild detergent and large amounts of water until no evidence of chemical remains

*Ingestion*

If vomiting occurs, keep head lower than hips to help prevent aspiration. Get medical attention, if needed

## 4 Fire-Fighting measures

*Flammable properties*

HANEX® can be combusted only with difficulty

*Extinguishing media:* Water, dry-chemical, CO2

*Hazardous gases / vapor produced in fire are carbon monoxide, methyl methacrylates, Aldehydes*

*Fire fighting instructions:*

Wear self-contained breathing apparatus

Keep personnel removed and upwind of fire

## 5 Accidental Release Measures

*Safeguard (Personnel): Use appropriate personal protective during clean up*

*Spill clean up: Recover undamaged and minimally contaminated material for reuse and reclamation*

## 6 Handling and Storage

*Handling (Personnel):*

Avoid breathing dust

Avoid breathing fumes generated during sawing, routing or drilling

*Storage:* Store in a dry and cool place

## 7 Exposure Controls and Personal Protection

*Chemical exposure standard, biological exposure standard:*

No information is available

*Engineering controls (ventilation):*

Use ventilation that is adequate to keep employee exposure to air borne concentration below exposure limits

*Personal protection*

Protective equipment: Eye / Face Protection

Wear safety glasses during operations such as sawing, sanding, drilling or routing. Use safety gloves, ear plug and safety shoes

## 8 Physical and Chemical Properties

*Appearance:* Aboard

*pH:* Not applicable

*Boiling point and range:* N/A

*Vapor Pressure:* N/A

*Solubility:* Insolubility

*Evaporation rate:* N/A

*Smell:* Nothing

*Melting Point/Freezing point:* N/A

*Specific Gravity:* 1.6~1.8

*Vapor Density:* N/A

*Odor Threshold:* N/A

*Explosive:* N/A

## 9 Stability and Reactivity

**Pyro lysate:** Acrylate vapor release because of frictional heat (Saw)

**Toxic decomposition product:** CO, Acrylate monomers, smog

**Toxic reaction:** N/A

**Other information:** In the presence of an ignition source is a potential dust explosion hazard

**Breath equipment:** Use breathing equipment when it's poorly ventilated

**Safety gloves:** Use safety gloves

**Personal protection:** Use ear plug and safety shoes

## 10 Toxicological Information (1/2)

**Possible exposed path**

Acute breathe toxic: Yes (Dust)      Acute oral toxic: No

Skin contact:      Yes      Eye contact:      Yes

**Physical, chemical and toxicological symptom:**

No information is available

**Influence by short-term and long-term exposure acute toxic:**

Oral: N/A      Skin: N/A

Inhalation: Inhalation irritant caused by heated acrylate vapor

**Skin:** Skin irritant caused by heated acrylate vapor

**Eye:** Eye irritant caused by heated acrylate vapor

**Inhalation irritant:** No information is available

**Skin irritable substance:** No information is available

## 11 Toxicological Information (2/2)

**Carcinogenic substance:**

- IARC: 3, non-classified      - ACGIH: non-classified

**Reproductive substance:** No information is available

**Organ, whole body toxic substance (once exposure):**

No information is available

**Organ, whole body toxic substance (repeated exposure):**

No information is available

## 12 Ecological Information

**Biodegradation:** N/A

**Bioaccumulation:** N/A

**Aquatic Toxicity:** N/A

## 13 Disposal Considerations

*Dispose in accordance with federal, state and local regulation*

*The owner of the material is responsible for proper waste disposal*

**Caution:** Use breathing equipment to avoid breathing dust

## 14 Transport Information

*Product is not classified for any mode of transportation*

**Caution:** Flat-Pallet stacking

## 15 Regulatory Information

*Not classified as hazardous according to criteria of occupation safety and health acts*

*Not classified as hazardous according to criteria of toxic chemicals control acts*

## 16 Other Information

*The data in this Safety Data Sheet relates only to the specific material designated herein and does not relate to use in combination with any other material or in any process*

*This information is based on technical information deemed reliable and is subject to revision as additional information is made available*

**Responsibility for SDS:** Hanex® products



# CARE & MAINTENANCE INFORMATION

Unlike other surfacing materials which are produced by laminating or coating, acrylic solid surface is non-porous and solid through the entire material. These features make Hanex® Solid Surfaces virtually maintenance free and repairable. To ensure long lasting beauty, follow these guidelines to prevent damages and care for your investment.



## Everyday Cleaning

Wipe clean with a damp cloth or sponge.

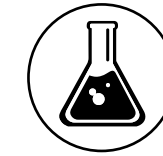
Basic stains: Clean with mild detergents or general purpose cleaners.

Periodically go over entire surface with an abrasive cleanser or wet white Scotch Brite™ pad to maintain a uniform appearance.



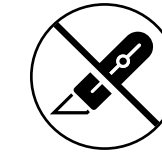
## Heat Damage

The innate feature of Hanex® Solid Surfaces gives it excellent heat resistant properties compared to other surfacing materials in the market. However, to prevent any damages from heat, never place hot items directly on Hanex® Solid Surfaces. Always use trivets with rubber feet when placing hot items on the countertop. Remember, placing hot pans or heat-generating appliances directly on Hanex® Solid Surfaces may cause damages to your countertop. Avoid direct and indirect heat with temperatures over 80°C (170°F).



## Chemical Damages

Avoid strong chemicals that can cause damages to your surfaces such as oven cleaners, acetone, paint removers and others. If exposed, promptly flush with water. Remember, prolonged contact with harsh chemicals can cause serious damage to your countertop.



## Simple Steps to Avoid Damages

Avoid cutting directly on Hanex® Solid Surfaces, use a cutting board.

Never place hot pans directly on the countertop. Even though Hanex® Solid Surfaces can withstand higher temperatures, prolonged or extreme heat could cause permanent damage.

Strong acids, such as those found in drain cleaners, should be flushed with water immediately.

Some of these items, when left on the surface may cause whitening, which can be difficult to remove.



## Removing Persistent Stains

To remove persistent stains, cigarette burns or scratches: scrub with an abrasive cleaners and green Scotch Brite™ pad.

Deep scratches can be removed by carefully sanding lightly with 120 grit sandpaper, followed by 220 grit and finishing with 320 grit sandpaper. Complete by rubbing the surface with a wet, green Scotch Brite™ pad in a circular motion to restore the finish.

Note: Different methods can be used depending on the finish

For deep scratches and/or other damages which may require expert repair, please contact your authorized and certified Hanex® Solid Surfaces fabricator.

# HANEX® SOLID SURFACES WARRANTY

Hyundai L&C Europe GmbH expressly warrants\* that it will repair or replace this product, free of charge, if it fails due to any manufacturing defect during the first 10 years after initial installation. If it is determined by Hyundai L&C Europe GmbH or its authorized warranty service agent that a defect in the material is identified within the ten year period, Hyundai L&C Europe GmbH will, at its sole option, repair or replace the defective Hanex® sheets in accordance with the following warranty provisions and exclusions.

**10** YEARS  
WARRANTY

## Hanex® Solid Surfaces Transferable 10-Year Limited Warranty

Hyundai L&C Corporation (hereunder "Hyundai") warrants to the purchaser that its product Hanex® Solid Surfaces, when fabricated and installed by Certified Hanex® Solid Surfaces Fabricator/Installer, shall be free from defect.

**Under this Transferable 10-Year Limited Warranty, Hyundai's authorized agents must be permitted sufficient time and opportunity to inspect the Product(s), evaluate and respond to any claim. All decisions regarding the existence of manufacturing defects or affecting this Warranty shall be made by Hyundai and shall be final and binding upon all parties.**

**The ten year limited warranty applies to Hanex® Solid Surface materials which is stored, handled, fabricated, and installed in the manner recommended by the Hanex® solid surfaces Fabrication Guide. Damage due to improper fabrication or installation is the responsibility of the fabricator/installer.**

**Minor variances and differences in colour, pattern – usual in the sector or technically unavoidable – shall not be regarded as a shortcoming.**

**Only a specific product range of Hanex® is suitable for outdoor application. This warranty is expressly limited to the the Hyundai L&C Europe GmbH approved range of products.**

## HANEX® SOLID SURFACES TRANSFERABLE 10-YEAR LIMITED WARRANTY DOES NOT COVER

1. Products and/or materials that have not been paid in full.
2. Failure to comply with Hyundai's recommended storage, handling, fabrication and installation and care & maintenance guidelines.
3. Damage caused by accidents, abuse, and/or misuse.
4. Damage caused by natural or environmental disasters or through vandalism or war-related influences.
5. Improper workmanship of fabrication and/or Installation.
6. Exposure to extreme heat; a trivet is always recommended for the use of your Hanex® Solid Surfaces.
7. Installed Hanex® Solid Surfaces that is removed from their original place of installation or alteration/repair performed on product by one other than Certified Hanex® Solid Surface Fabricator/Installer.
8. Product(s) installed in any outdoor application without the required authorisation of Hyundai L&C Europe GmbH.
9. Color variation from samples.
10. Failure caused by inadequate support or structural movement.
11. Exposure to harsh or corrosive chemicals and cleaners.
12. Excessive weight placed on Hanex® Solid Surfaces.
13. Appearance of edges, joints or seams due to improper fabrication/installation. Appearance of grout and/or caulk is not covered under warranty.
14. Supplemental repairs including, but not limited to, plumbing modifications, electrical, tile, cabinetry, flooring, backsplashes etc that may be necessary to repair or replace the Hanex® Solid Surface under this warranty.
15. Minor conditions such as scratches, stains, water spots, and burns, which may be corrected by Hanex® care & maintenance instructions/guidelines.
16. No other warranties express or implied, are made, including merchantability or fitness for a particular purpose. Except as provided herein, Hyundai is not liable for any loss of direct, incidental, or consequential damages as a result of the inability to use Hanex®.

\* Warranty claims require immediate and correct implementation of the checklist and general conditions provided by Hyundai L&C.

# CERTIFICATIONS

The quality of Hanex® Solid Surfaces is certified by various institutions such as SCS, Greenguard, NSF. The result of specification and certifications can be downloaded under [www.hyundailnc.eu](http://www.hyundailnc.eu).

Coming soon: EPD/ Environmental Product Declaration, New SCS, and more.....

## CERTIFICATION ISO 14001

Certification of environmental management system



## CERTIFICATION ISO 9001

Certification of quality management system



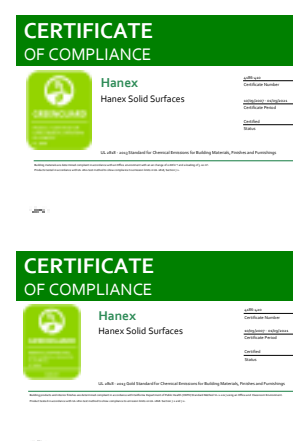
## CERTIFICATION ETA

European technical assessment for Hanex® façade panel



## CERTIFICATION GREENGUARD & GOLD

Certification of low chemical emissions  
Gold certification of low chemical emissions



## CERTIFICATION DESIGNATION GREEN COMPANY

Certificate of Designation Green Company



## TEST REPORT PHTHALATES CONTENT

Hanex® Test report on phthalates content



## CERTIFICATE NSF

Certification of standard for materials used in food equipment



## CERTIFICATE NSF (FACTORY)

Certification of standard for materials used in food equipment



## TEST REPORT CONTAMINATION RESISTANCE

Hanex® Test report on contamination resistance



## TEST REPORT HEAVY METAL CONTENT

Hanex® Test report on heavy metal content





# STANDARD SIZE

To meet your individual requirements we are offering different sheet thicknesses (19mm; 12mm; 6mm) and different dimensions to maximize the economical and efficient usage. Special colours, patterns and dimensions can be produced on a project based minimum order quantity.

## TEST REPORT COMPRESSIVE STRENGTH

Hanex® Test report on compressive strength



## TEST REPORT WITH SOLID COLOR

Hanex® Test report of solid colors



## TEST REPORT WITH CHIP COLOR

Hanex® Test report of chip colors



## TEST REPORT ASTM G155-13

Hanex® Test report in accordance with ASTM G155-13 / D523-14 / D2244-16



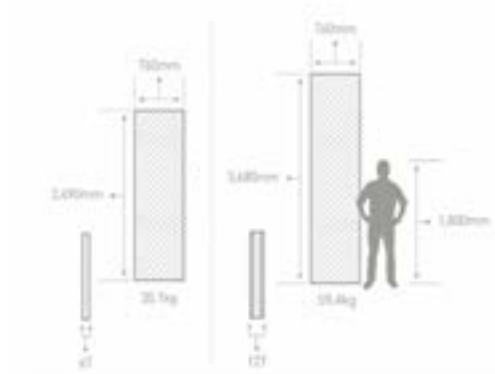
## TEST REPORT ASTM G22

Gold certification of low chemical emissions



## HPD

HPD (Health Product Declaration) disclosing product ingredients and health effects associated with it.



Sheet Thickness in mm	Sheet Width in mm	Sheet Length in mm			Sheets / Pallet	Weight(kg) / Sheet
6	760		2490		40	20.1
6	760			3070*	40	24.8
6		930	2490		30	25.0
12	760			3680	20	59.4
12		930		3680	15	72.3
19	760		3070		10	78.5

\* only on request



L & C

Hyundai L&C Europe GmbH  
Düsseldorfer Straße 13  
65760 Eschborn, Germany  
+49 6196 5869 012  
[info@hyundailnc.eu](mailto:info@hyundailnc.eu)  
[www.hyundailnc.eu](http://www.hyundailnc.eu)

